



**FORMATION TESTER
TIME LOG
BUILD-UP PLOTS**

COMPANY		ORIGIN ENERGY RESOURCES LIMITED	
WELL		CHILDERS COVE 1	
FIELD		ONSHORE OTWAY BASIN	
PROVINCE/COUNTRY		VICTORIA	
COUNTRY/STATE		AUSTRALIA	
LOCATION		38DEG29'31.96"S 142DEG44'46.66"E FIELD PRINT	
LSD	SEC	TWP	RGE
API Number		Other Services	
Permit Number PEP 154		MCG-MPD-MDN MMR-MDL-MSS	
Permanent Datum GROUND LEVEL, Elevation 50 metres			Elevations:
Log Measured From R. T. @ 5.3 METRE above Permanent Datum			KB 51.50 metres
Drilling Measured From R. T.			DF 51.50 metres
Date	04-Oct-2005		GL 46.20 metres
Run Number	THREE		
Depth Driller	2658.00 metres		
Depth Logger	2557.50 metres		
First Reading	2554.50 metres		
Last Reading	2535.70 metres		
Casing Driller	544.50 metres		
Casing Logger	544.20 metres		
Bit Size	8.50 inches		
Hole Fluid Type	KCL/PHPA/POL		
Density / Viscosity	1.15 g/cc	59.00 CP	
PH / Fluid Loss	8.60	4.00 ml/30Min	
Sample Source	FLOWLINE		
Rm @ Measured Temp	0.65 @ 13.9	ohm-m	
Rmf @ Measured Temp	1.06 @ 13.9	ohm-m	
Rmc @ Measured Temp	0.53 @ 14.1	ohm-m	
Source Rmf / Rmc	FILTER	PRESS	
Rm @ BHT	0.09 @ 95.5	ohm-m	
Time Since Circulation	32 HOURS		
Max Recorded Temp	95.50	deg C	
Equipment Name	MFT		
Equipment / Base	8	SALE	
Recorded By	G. MCMANUS, B. MOSS		
Witnessed By	BRIAN WEB		
CIRC. STOP	13:00 3/10		

BOREHOLE RECORD		
Bit Size inches	Depth From metres	Depth To metres
8.500	544.50	2658.00

CASING RECORD				
Type	Size inches	Depth From metres	Shoe Depth metres	Weight pounds/ft
K-55	9.625	0.00	544.50	36.00

REMARKS

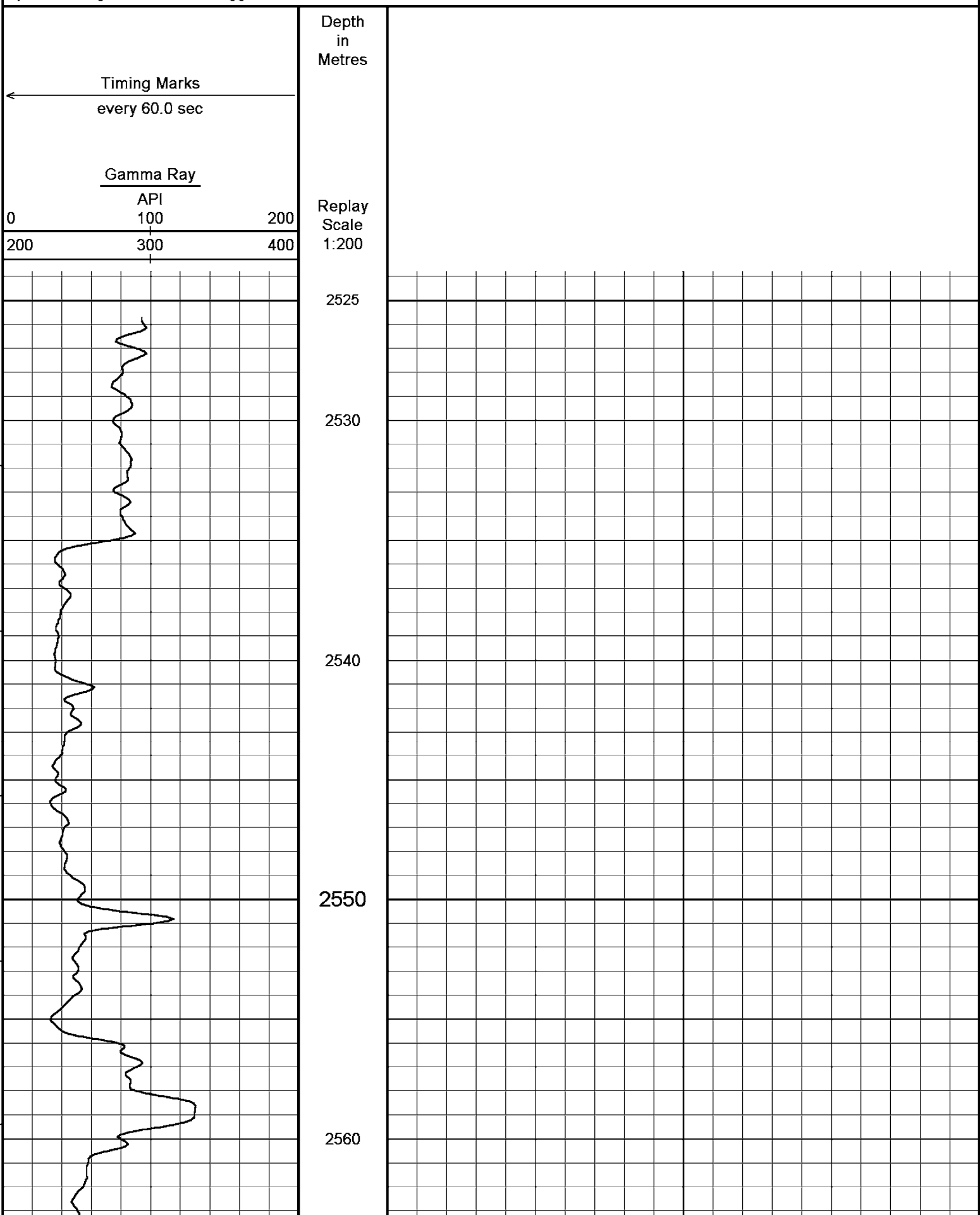
1) SOFTWARE ISSUE: JUN 17, 2004.
 2) CUSTOMER SCALES AND INTERVALS LOGGED.
 3) HFS, MCG, MFT RAN IN COMBINATION.
 4) HARDWARE: MFT: 2 X BOWSPRING CENTRALISERS
 MCG: 1 X BOWSPRING CENTRALISERS
 5) SERVICE ORDER: 2072
 6) RIG: CENTURY 7
 7) DUE TO FAILURE OF PRIMARY MFT 8, MFT 17 USED IN PLACE. THIS LOG DISPLAYS MFT 8 DATA ONLY.

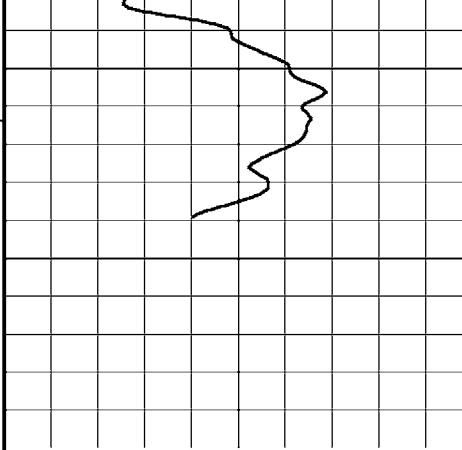
MFT / RFS - QUARTZ TEST SUMMARY										
Test No.	Depth metres	TVD metres	Hyd Pres Before psig	Drawdown Pressure 1 psig	Drawdown Pressure 2 psig	Final Shut- in Pressure psig	Hyd Pres After psig	Mobility 1 md/cp	Mobility 2 md/cp	Remarks
1	2535.71	2535.71	4254.98	0.00	0.00	3569.04	4254.87	0.000	0.000	GOOD TEST
2	2546.21	2546.21	4272.13	0.00	0.00	3583.74	4271.96	0.000	0.000	GOOD TEST
3	2554.50	2554.50	4285.37	0.00	0.00	3595.53	4284.86	0.000	0.000	GOOD TEST

All interpretations are opinions based on inferences from electrical or other measurements and we cannot, and do not, guarantee the accuracy or correctness of any interpretations, and we shall not, except in the case of gross or wilful negligence on our part, be liable or responsible for any loss, costs, damages or expenses incurred or sustained by anyone resulting from any interpretation made by any of our officers, agents or employees. These interpretations are also subject to our general terms and conditions in our price schedule.

↓ **GAMMA PASS 2 @ 2570 m** ↓

Depth Based Data - Maximum Sampling Increment 10.0cm
Plotted on 06-OCT-2005 13:46
Filename: C:\Data\Childers Cove\MCG098_2.dta
Recorded on 05-OCT-2005 00:01
System Configuration Dates: Logged 17-JUN-2004: Plotted 23-AUG-2004:





2570
2574
Depth
in
Metres

Timing Marks
every 60.0 sec

Gamma Ray		
API		
0	100	200
200	300	400

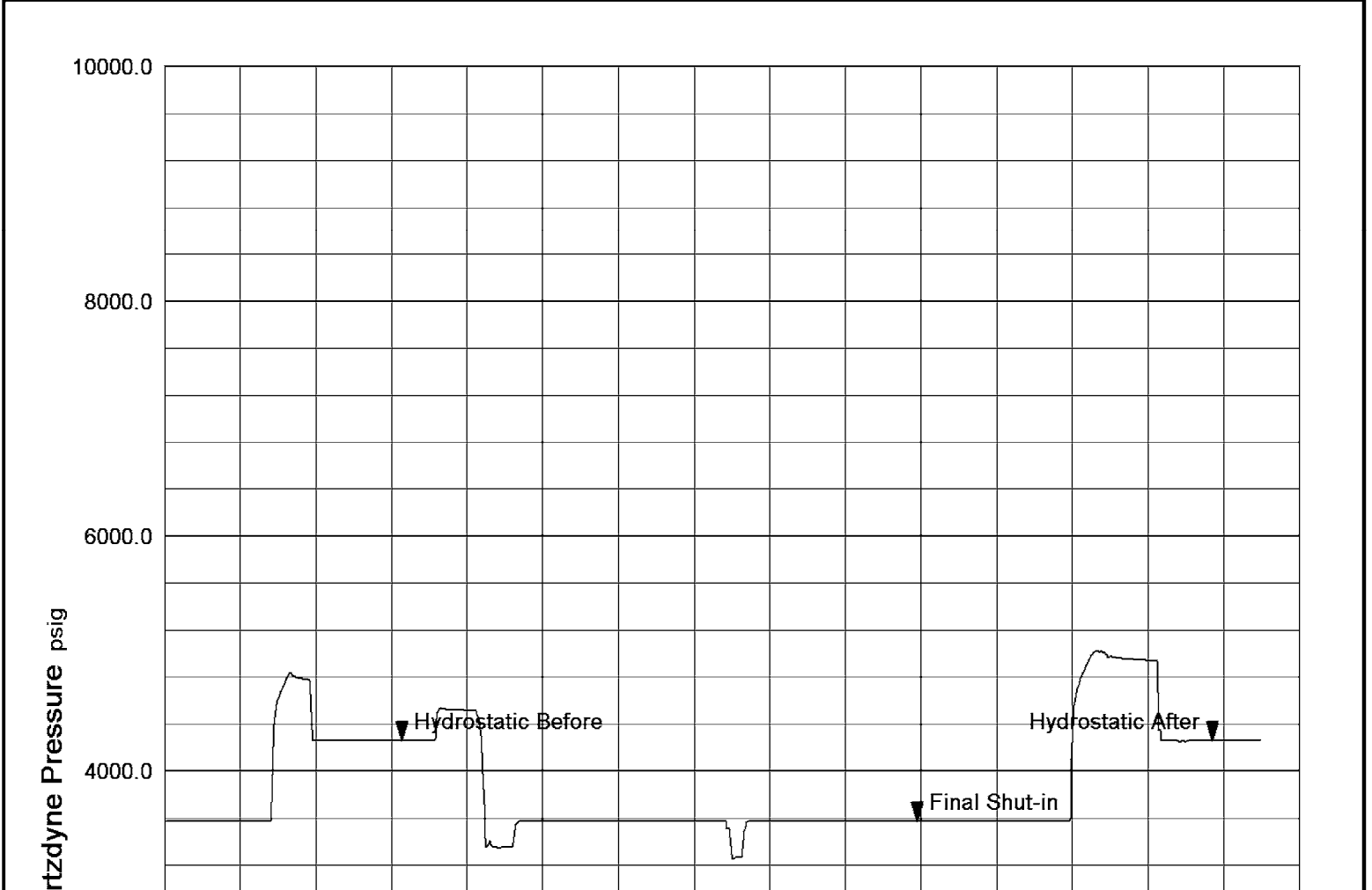
Replay
Scale
1:200

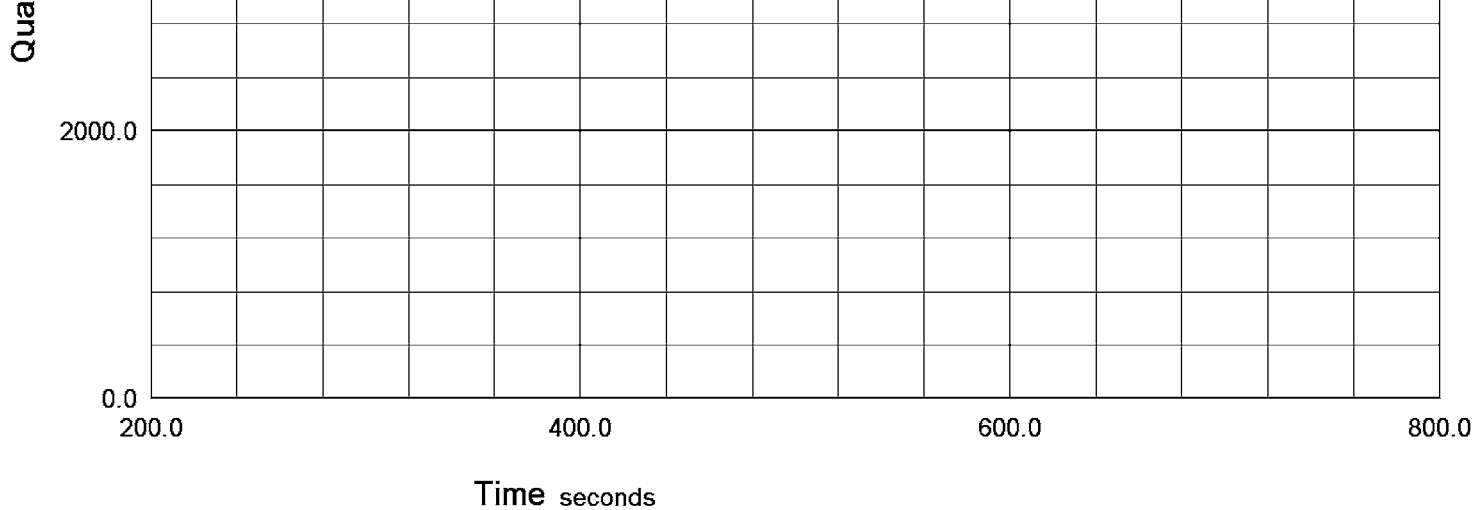
Depth Based Data - Maximum Sampling Increment 10.0cm
 Plotted on 06-OCT-2005 13:46
 Filename: C:\Data\Childers Cove\MCG098_2.dta
 Recorded on 05-OCT-2005 00:01
 System Configuration Dates: Logged 17-JUN-2004: Plotted 23-AUG-2004:

↑ **GAMMA PASS 2 @ 2570 m** ↑

Pressure - Time Plot

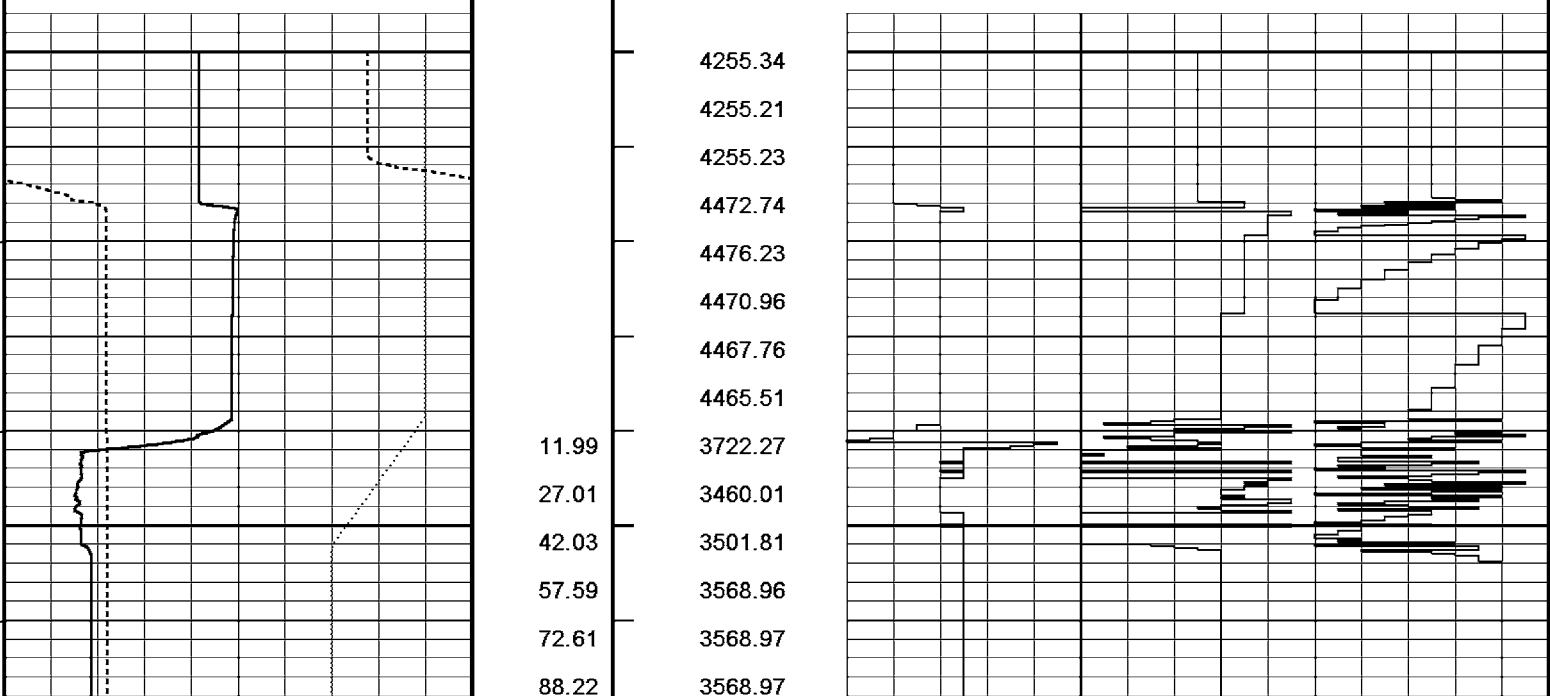
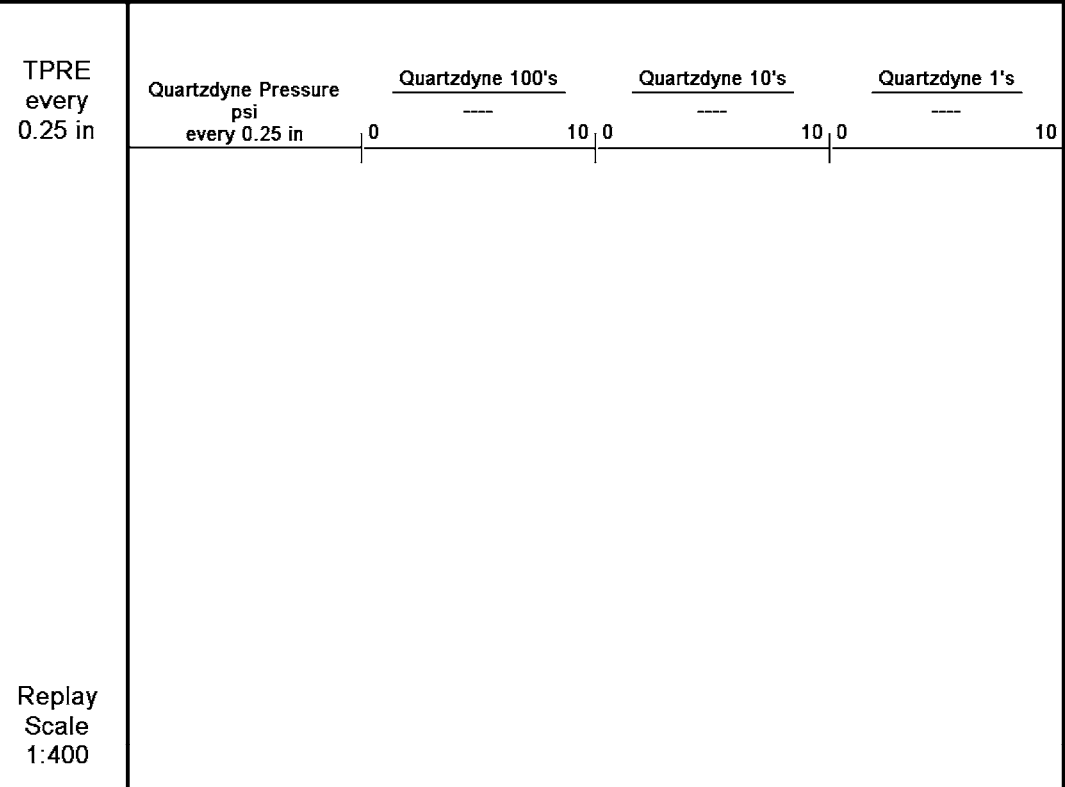
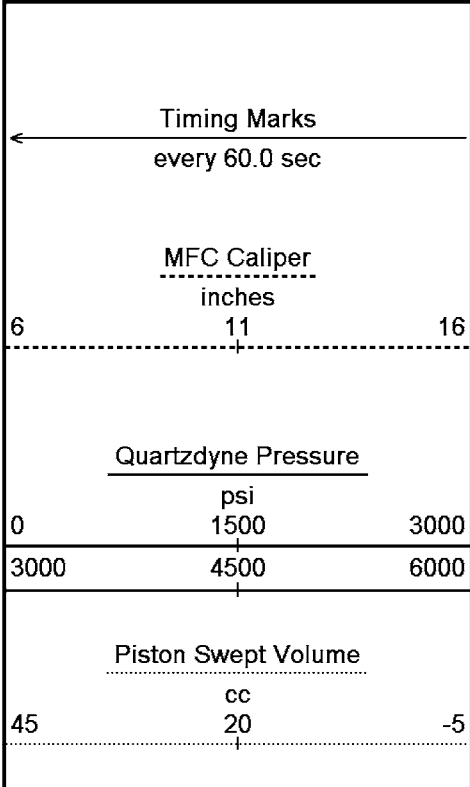
File: C:\Data\Childers Cove\MCG098MFT008_6A.dta
 Run Id: Pretest 1 at 2535.71 m
 Test Number: 1
 File Date: 04-OCT-2005 21:27:46

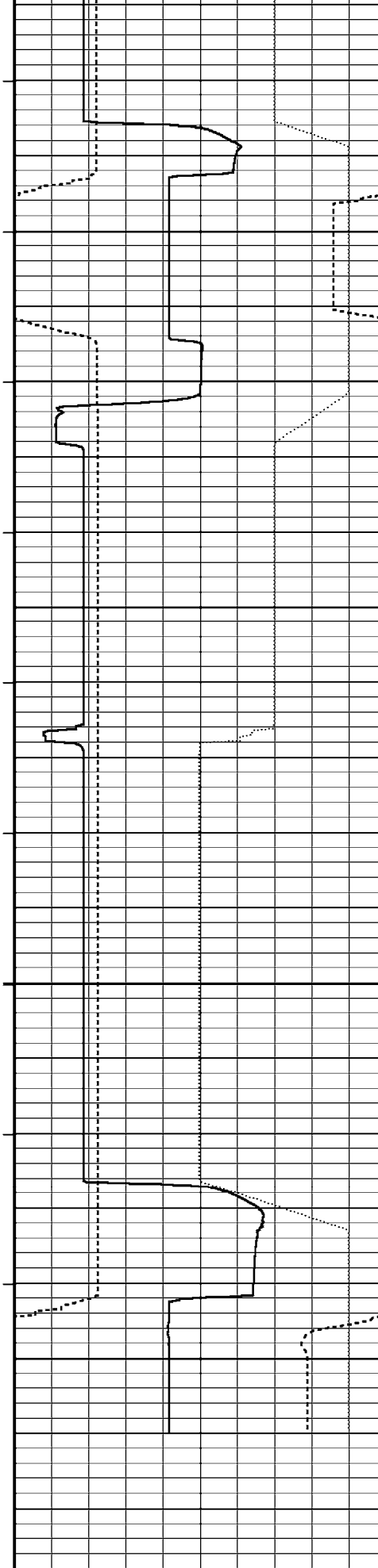




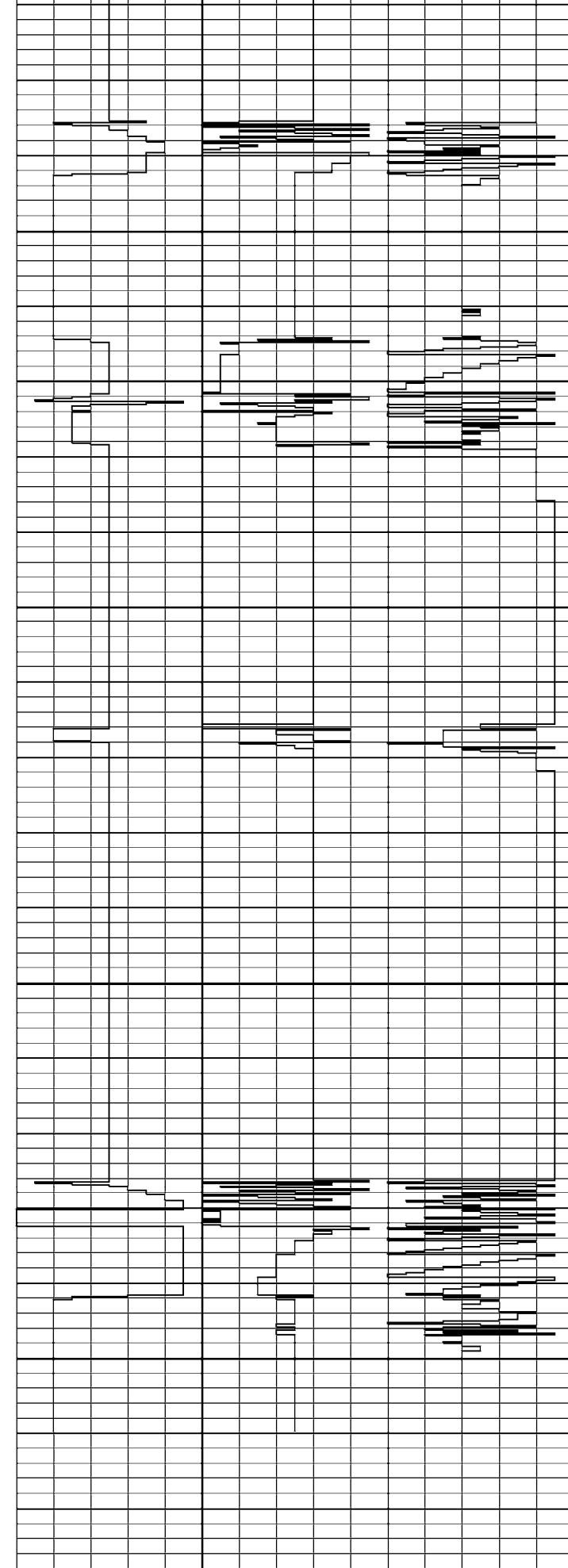
↓ **Pretest 1 at 2535.71 m** ↓

Time Based Data - Notional Logging Speed 10.00 metres/min Plotted on 06-OCT-2005 13:46
 Filename: C:\Data\Childers Cove\MCG098MFT008_6A.dta Recorded on 04-OCT-2005 21:25
 System Configuration Dates: Logged 17-JUN-2004: Processed 17-JUN-2004: Plotted 23-AUG-2004:





103.24	3568.97
118.22	3568.98
133.83	3568.99
10.81	4696.99
26.38	4351.80
41.40	4254.92
56.38	4254.95
71.97	4254.97
86.99	4254.93
102.58	4515.50
9.60	3714.53
24.58	3345.85
40.18	3568.96
55.17	3569.01
70.77	3569.03
85.79	3569.03
100.81	3569.03
116.40	3569.04
131.37	3569.04
16.09	3559.90
29.99	3569.02
44.99	3569.04
60.61	3569.03
75.60	3569.04
91.21	3569.04
106.21	3569.04
121.20	3569.05
136.81	3569.05
151.82	3569.06
167.42	3569.06
182.39	3569.07
11.39	4944.98
26.99	4957.44
42.00	4938.46
57.63	4256.73
72.62	4254.85
87.59	4254.91



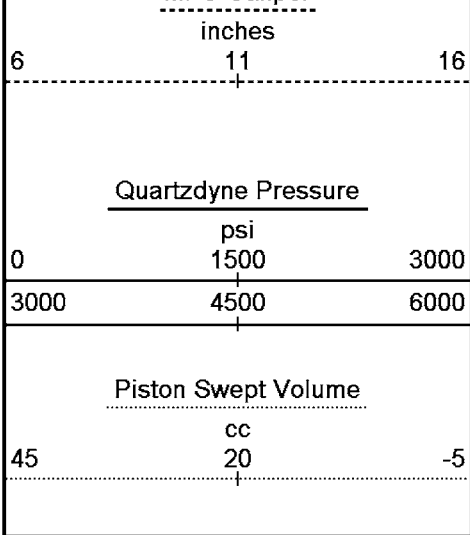
← Timing Marks every 60.0 sec

MFC Caliper

TPRE every 0.25 in

Quartzdyne Pressure psi every 0.25 in

Quartzdyne 100's Quartzdyne 10's Quartzdyne 1's
 0 10.0 10.0 10



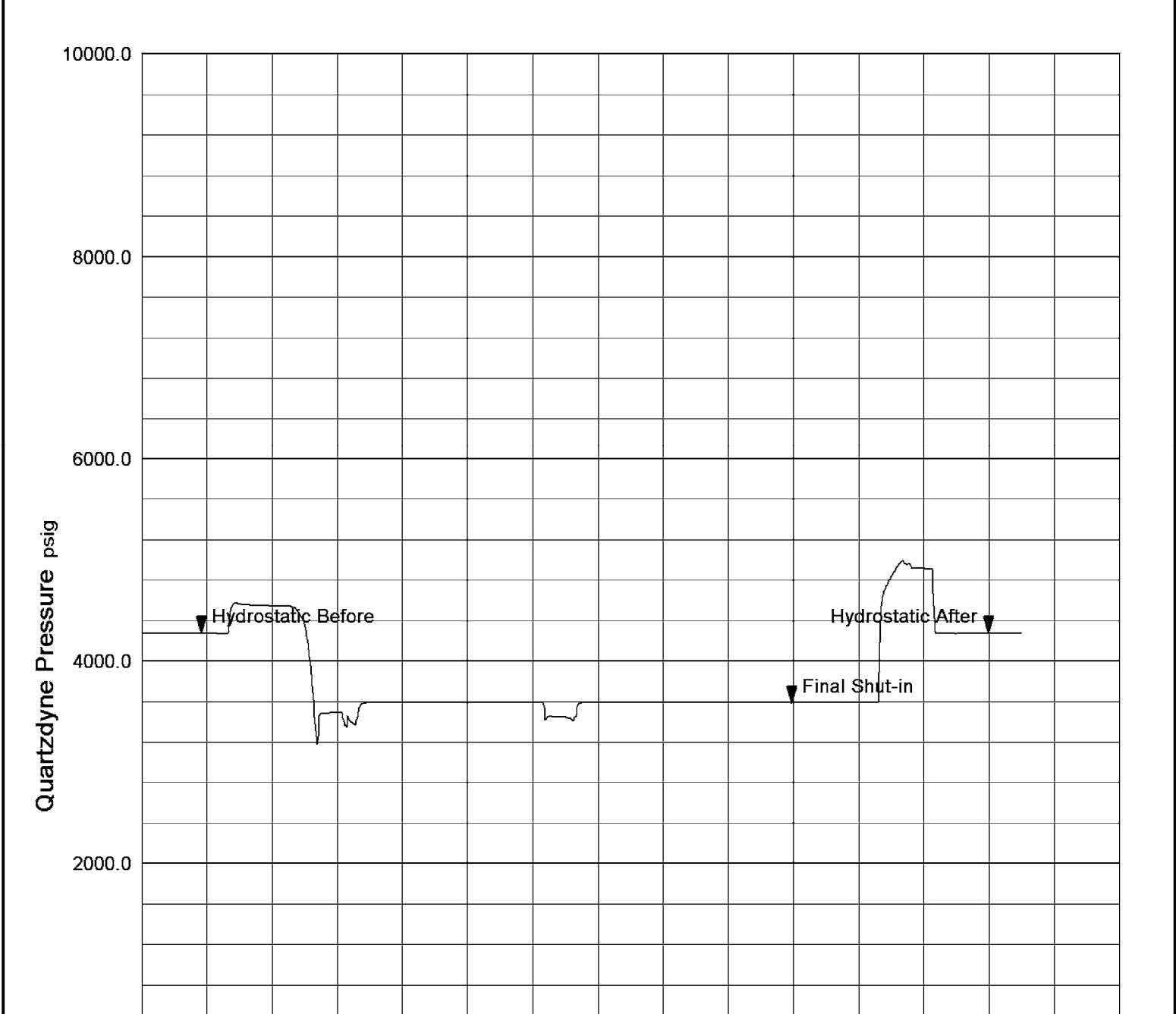
Replay
Scale
1:400

Time Based Data - Notional Logging Speed 10.00 metres/min
 Plotted on 06-OCT-2005 13:46
 Filename: C:\Data\Childers Cove\MCG098MFT008_6A.dta
 Recorded on 04-OCT-2005 21:25
 System Configuration Dates: Logged 17-JUN-2004: Processed 17-JUN-2004: Plotted 23-AUG-2004:

↑ Pretest 1 at 2535.71 m ↑

Pressure - Time Plot

File: C:\Data\Childers Cove\MCG098MFT008_8A.dta
 Run Id: Pretest 2 at 2546.19 m
 Test Number: 2
 File Date: 04-OCT-2005 21:28:04



0.0
0.0

200.0

400.0

600.0

Time seconds



Pretest 2 at 2546.19 m



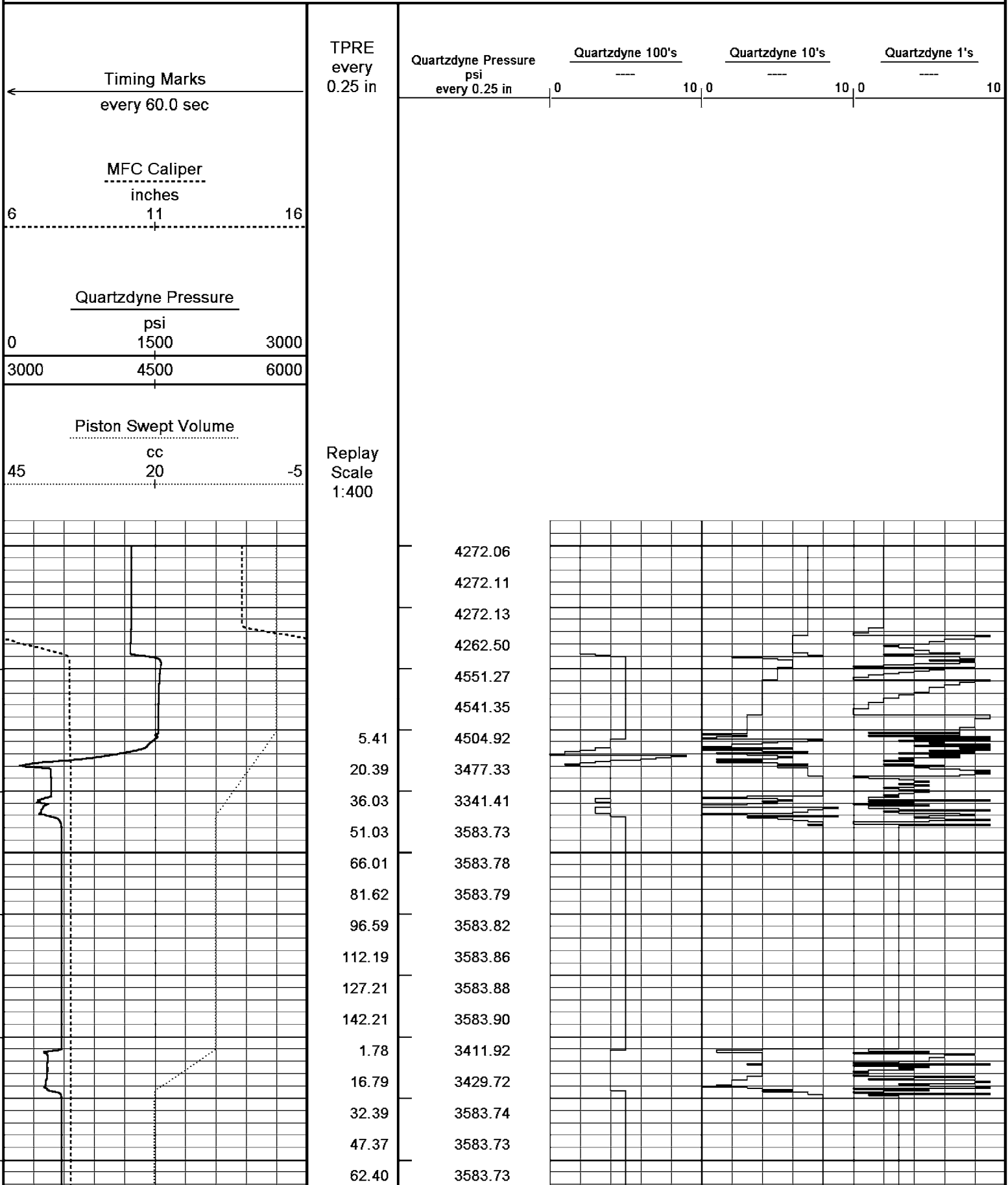
Time Based Data - Notional Logging Speed 10.00 metres/min

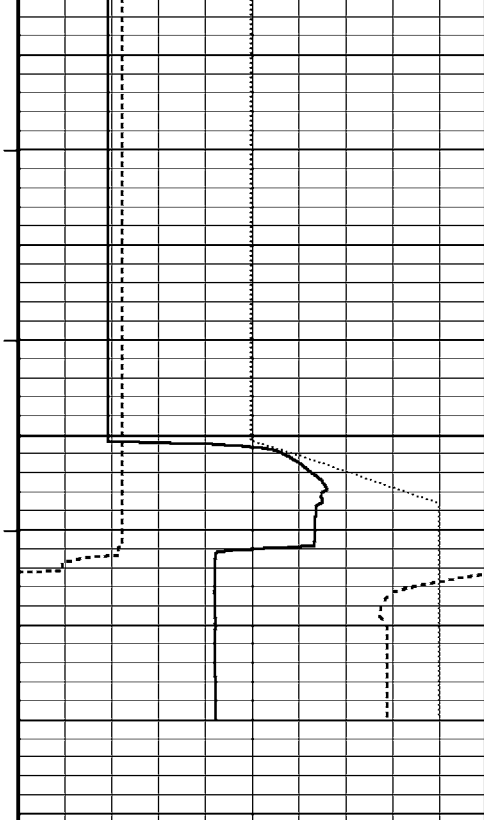
Plotted on 06-OCT-2005 13:46

Filename: C:\Data\Childers Cove\MCG098MFT008_8A.dta

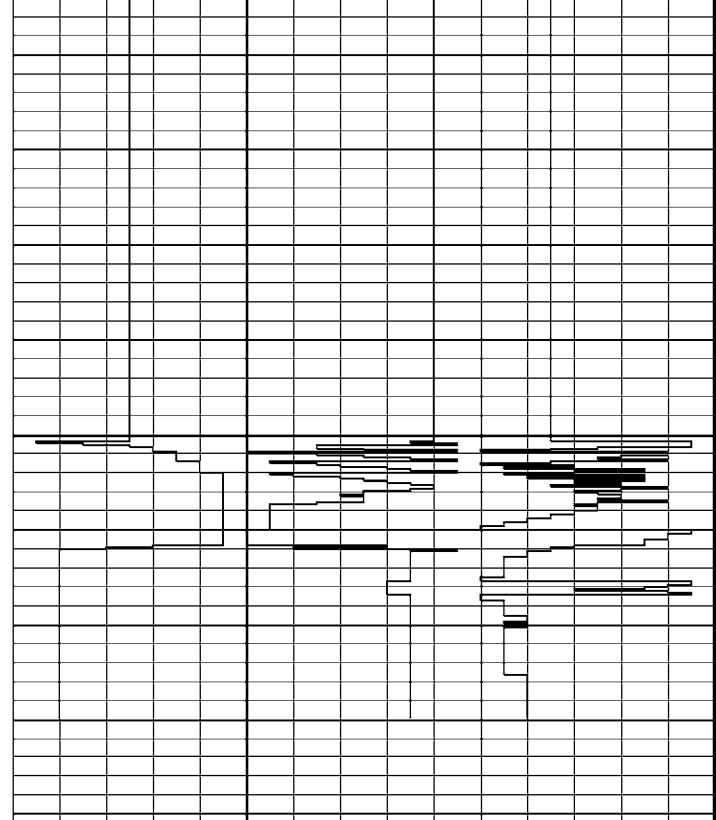
Recorded on 04-OCT-2005 21:54

System Configuration Dates: Logged 17-JUN-2004: Processed 17-JUN-2004: Plotted 23-AUG-2004:





77.98	3583.73
93.01	3583.73
108.57	3583.73
123.61	3583.73
138.61	3583.74
154.19	3583.74
169.18	3583.75
184.78	3583.77
199.76	3583.79
10.79	4844.68
26.39	4913.65
41.40	4271.73
56.99	4271.52
72.02	4271.98
	4272.01



← Timing Marks every 60.0 sec

MFC Caliper inches
6 11 16

Quartzdyne Pressure psi
0 1500 3000
3000 4500 6000

Piston Swept Volume cc
45 20 -5

TPRE every 0.25 in

Quartzdyne Pressure psi every 0.25 in Quartzdyne 100's Quartzdyne 10's Quartzdyne 1's

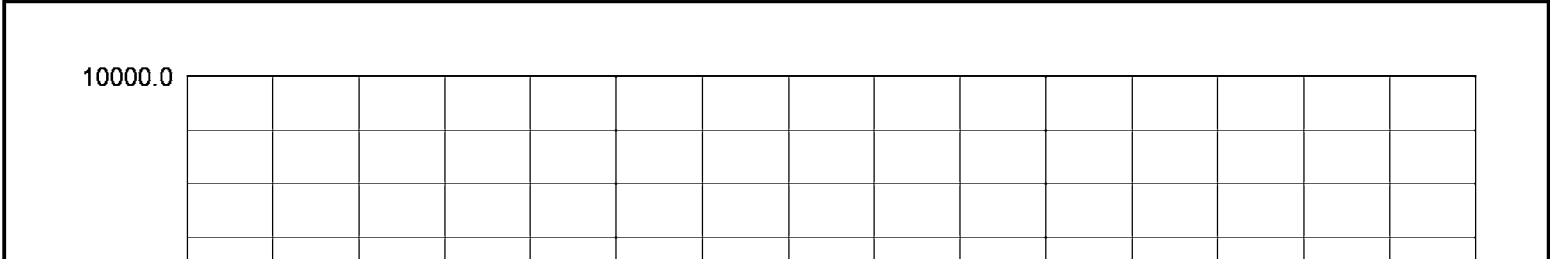
Replay Scale 1:400

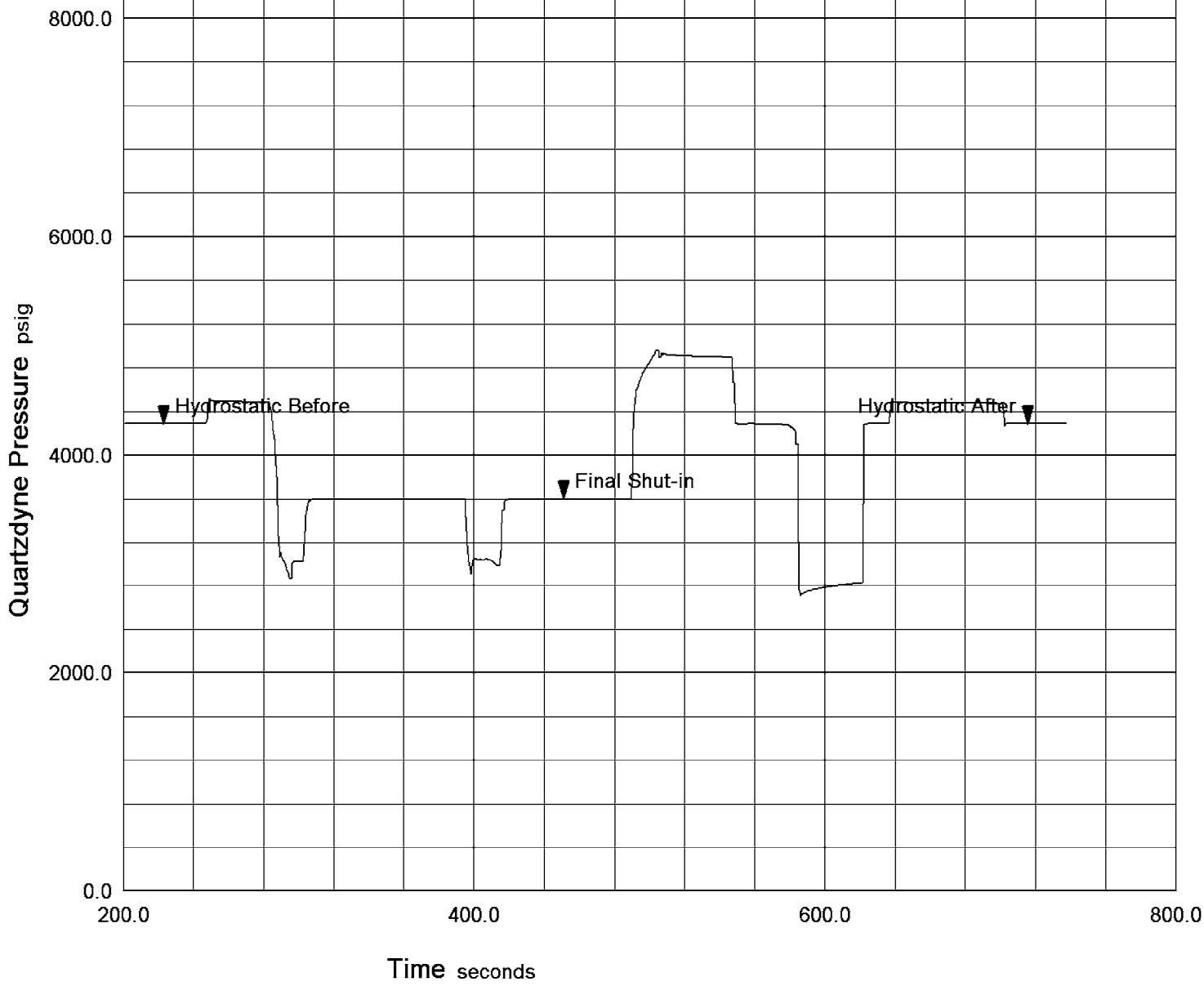
Time Based Data - Notional Logging Speed 10.00 metres/min Plotted on 06-OCT-2005 13:46
 Filename: C:\Data\Childers Cove\MCG098MFT008_8A.dta Recorded on 04-OCT-2005 21:54
 System Configuration Dates: Logged 17-JUN-2004: Processed 17-JUN-2004: Plotted 23-AUG-2004:

↑ Pretest 2 at 2546.19 m ↑

Pressure - Time Plot

File: C:\Data\Childers Cove\MCG098MFT008_9A.dta File Date: 04-OCT-2005 21:28:18
 Run Id: Pretest 3 at 2554.51 m
 Test Number: 3





Pretest 3 at 2554.51 m

Time Based Data - Notional Logging Speed 10.00 metres/min Plotted on 06-OCT-2005 13:46
 Filename: C:\Data\Childers Cove\MCG098MFT008_9A.dta Recorded on 04-OCT-2005 22:05
 System Configuration Dates: Logged 17-JUN-2004: Processed 17-JUN-2004: Plotted 23-AUG-2004:

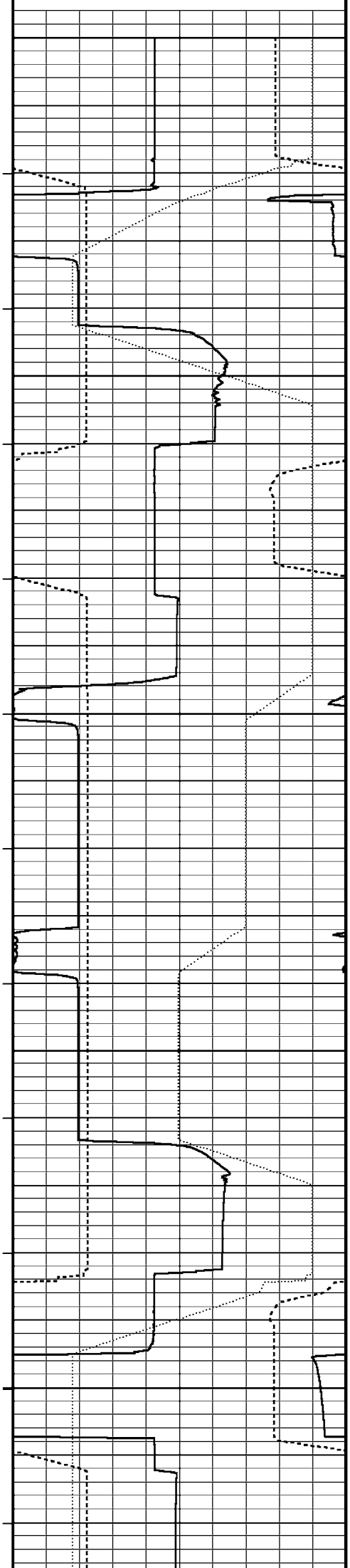
Timing Marks every 60.0 sec		
MFC Caliper inches		
6	11	16
Quartzdyne Pressure psi		
0	1500	3000
3000	4500	6000

TPRE every 0.25 in	Quartzdyne Pressure psi every 0.25 in	Quartzdyne 100's ----- 10 0	Quartzdyne 10's ----- 10 0	Quartzdyne 1's ----- 10
--------------------------	---	-----------------------------------	----------------------------------	-------------------------------

Piston Swept Volume cc		
45	20	-5

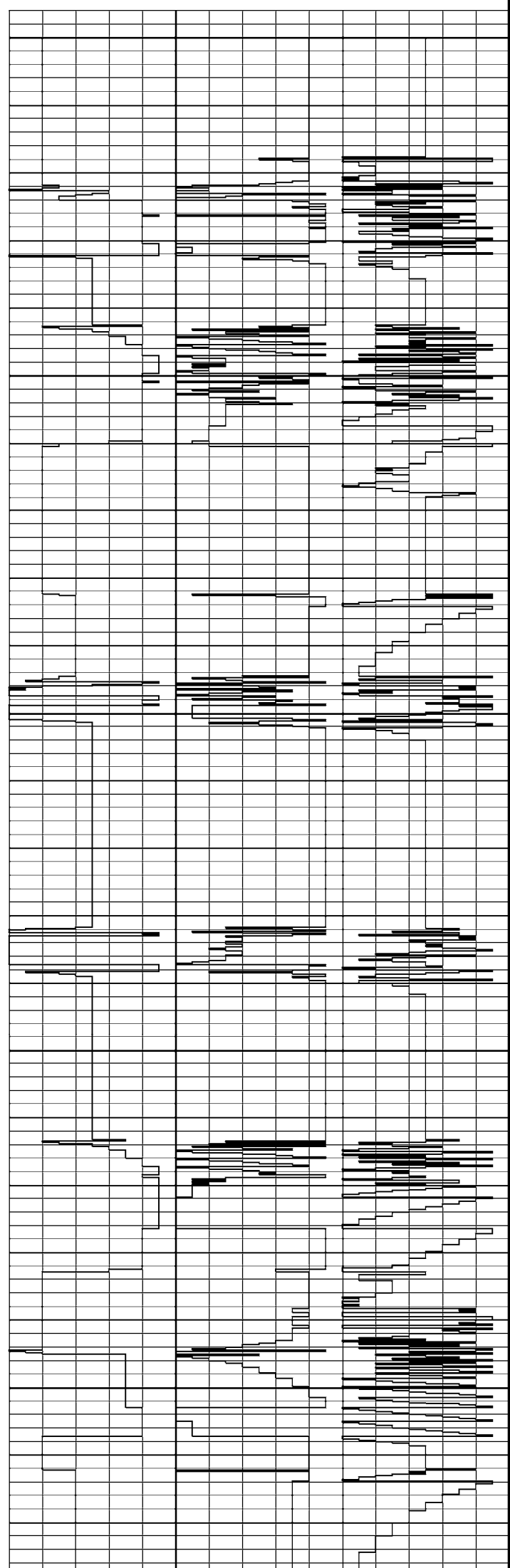
Replay
Scale

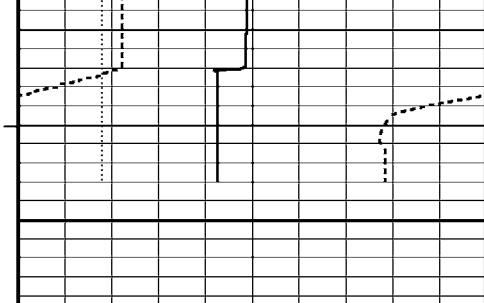
1.400



- 15.00
- 29.98
- 45.61
- 61.21
- 76.21
- 91.20
- 106.20
- 121.81
- 136.81
- 152.41
- 11.37
- 26.39
- 42.01
- 57.01
- 72.62
- 87.61
- 102.61
- 10.20
- 25.19
- 40.78
- 55.81
- 70.79
- 86.42
- 5.39
- 21.02
- 36.00
- 51.01
- 66.60
- 81.58
- 97.18
- 112.19
- 127.18
- 142.81
- 157.79
- 5.40
- 20.40

- 4285.83
- 4285.78
- 4285.70
- 4285.65
- 4277.71
- 2901.38
- 2912.86
- 3595.20
- 3595.46
- 4878.30
- 4840.51
- 4830.60
- 4285.69
- 4284.12
- 4285.37
- 4285.38
- 4286.00
- 4485.57
- 4482.27
- 2969.68
- 3592.03
- 3595.51
- 3595.58
- 3595.60
- 3595.64
- 3595.73
- 3038.94
- 2979.59
- 3595.35
- 3595.52
- 3595.53
- 3595.54
- 4235.39
- 4895.46
- 4904.65
- 4897.20
- 4281.84
- 4280.10
- 4231.37
- 2773.77
- 2805.50
- 4285.52
- 4478.94
- 4474.23
- 4471.92





35.41 4470.14
 51.01 4285.25
 66.01 4284.81
 4285.08



← Timing Marks
 every 60.0 sec

MFC Caliper
 inches
 6 11 16

Quartzdyne Pressure
 psi
 0 1500 3000
 3000 4500 6000

Piston Swept Volume
 cc
 45 20 -5

TPRE
 every
 0.25 in

Replay
 Scale
 1:400

Quartzdyne Pressure
 psi
 every 0.25 in

Quartzdyne 100's 0 10 0

Quartzdyne 10's 0 10 0

Quartzdyne 1's 0 10

Time Based Data - Notional Logging Speed 10.00 metres/min Plotted on 06-OCT-2005 13:46
 Filename: C:\Data\Childers Cove\MCG098MFT008_9A.dta Recorded on 04-OCT-2005 22:05
 System Configuration Dates: Logged 17-JUN-2004: Processed 17-JUN-2004: Plotted 23-AUG-2004:

↑ Pretest 3 at 2554.51 m ↑

BEFORE SURVEY CALIBRATION

C:\Data\Childers Cove\MCG098MFT008_6A.dta

General Constants All 000

General Parameters
 Mud Resistivity 0.250 ohm-metres
 Mud Resistivity Temperature 17.100 degrees C
 Water Level 0.000 metres
 Density/Neutron Processing Wet Hole

Hole/Annular Volume and Differential Caliper Parameters
 HVOL Caliper 1 Bit Size
 HVOL Caliper 2 Bit Size
 Annular Volume Diameter 7.000 inches
 Caliper for Differential Caliper None

Rwa Parameters
 Porosity used N/A
 Resistivity used N/A
 RWA Constant A N/A
 RWA Constant M N/A

Quartzdyne Calibration Constants and Coefficients MFT 008

Serial Number 156002
 Calibration Date 25-JAN-02
 Temperature polynomial order 3
 Pressure polynomial order 3
 Temperature scaling factor 0.0100000000000
 Pressure scaling factor 0.0100000000000

Temperature offset frequency 55313.000000000000
 Pressure offset frequency 20231.000000000000
 Span adjustment 1.000000000000
 Offset adjustment 0.0000000000e+000

	T0	T1	T2	T3	T4
P0	1.06712e+001	-5.02859e-001	-2.09468e-002	8.27075e-006	0.00000e+000
P1	4.23434e+001	-2.23910e-002	2.56713e-005	-6.06661e-008	0.00000e+000
P2	-2.04657e-003	1.09786e-005	-2.68807e-008	7.75475e-011	0.00000e+000
P3	6.55210e-007	-2.45045e-009	2.80271e-011	-1.60433e-014	0.00000e+000
P4	0.00000e+000	0.00000e+000	0.00000e+000	0.00000e+000	0.00000e+000

Caliper Calibration MFT 008

Base Calibration on 4-OCT-2005,19:32
 Field Calibration on 4-OCT-2005,19:32

Base Calibration

Reading No	Measured	Calibrator Size (in)
1	4371	4.00
2	4944	6.00
3	5833	8.00
4	7161	10.00
5	0	0.00
6	N/A	N/A

Field Calibration

Measured Caliper (in)	Actual Caliper (in)
8.01	8.00

DOWNHOLE EQUIPMENT

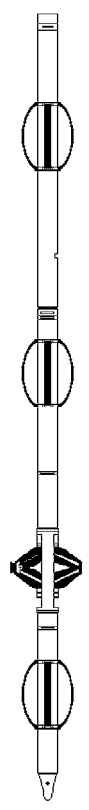
C:\Data\Childers Cove\MCG098MFT008_6A.dta

Compact Gamma
 MCG 98 Length: 2.65 m Weight: 63.9 lb

Compact Repeat Formation Tester
 MFT 8 Length: 4.17 m Weight: 112.4 lb

Pressure Bung + Hole Finder
 HFS 3 Length: 0.28 m Weight: 6.6 lb

Total Length: 7.10 m Weight: 183.0 lb



- Tool Zero (2.15m from bottom)
- 0.00 m PSVL - Piston Swept Volume
 - 0.00 m QONE - Quartzdyne 1's
 - 0.00 m QTEN - Quartzdyne 10's
 - 0.00 m QHUN - Quartzdyne 100's
 - 0.00 m QDPF - Quartzdyne Pressure
 - 0.00 m FPMC - MFP Motor Current
 - 0.00 m FCCP - MFC Caliper
 - 0.00 m FCMC - MFC Motor Current

All measurements relative to tool zero.

COMPANY	ORIGIN ENERGY RESOURCES LIMITED		
WELL	CHILDERS COVE 1		
FIELD	ONSHORE OTWAY BASIN		
PROVINCE/COUNTY	VICTORIA		
COUNTRY/STATE	AUSTRALIA		

Elevation Kelly Bushing	51.50	metres	First Reading	2554.50	metres
Elevation Drill Floor	51.50	metres	Depth Driller	2658.00	metres
Elevation Ground Level	46.20	metres	Depth Logger	2557.50	metres

FORMATION TESTER

